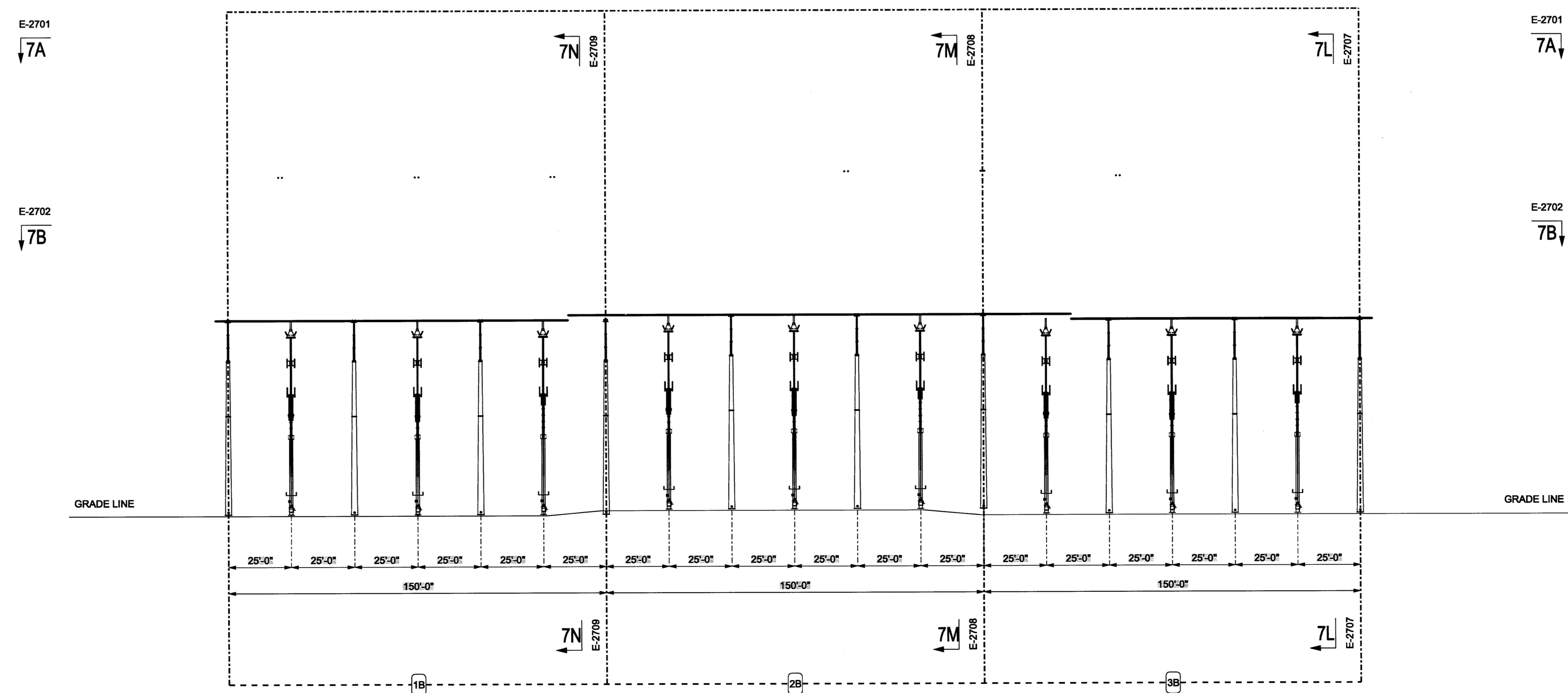


SECTION "7E-7E"



SECTION "7H-7H"

CONCEPTUAL

| ISSUE# | NO | DATE | REVISION DESCRIPTION | APPD |
|---|----|------|------------------------------|------|
| | | | | |
| | | | | |
| <small>THIS DRAWING IS THE PROPERTY OF PATH TRANSMISSION COMPANY, LLC AND IS LOANED UPON CONDITION THAT IT IS NOT TO BE REPRODUCED OR COPIED, IN WHOLE OR IN PART, OR USED FOR FURNISHING INFORMATION TO ANY PERSON WITHOUT THE WRITTEN CONSENT OF THE PATH TRANSMISSION COMPANY, LLC. ON YOUR APPROVED INSTRUMENTAL TO THEIR INTEREST, AND IS TO BE RETURNED UPON REQUEST.</small> | | | | |
| PATH WEST VIRGINIA KEMPTOWN STATION | | | | |
| MONROVIA MARYLAND 765KV ELECTRICAL ASSEMBLY SECTIONS "7E-7E" "7H-7H" | | | | |
| DWG. NO. E-2705 | | | STATION PROJECTS ENGINEERING | |
| SCALE: 1" = 30' DR: DPM CH: ENG: DATE: 09/11/09 | | | APPROVED BY: | |
| 1 RIVERSIDE PLAZA COLUMBUS, OH 43215 | | | R E V C1 | |

