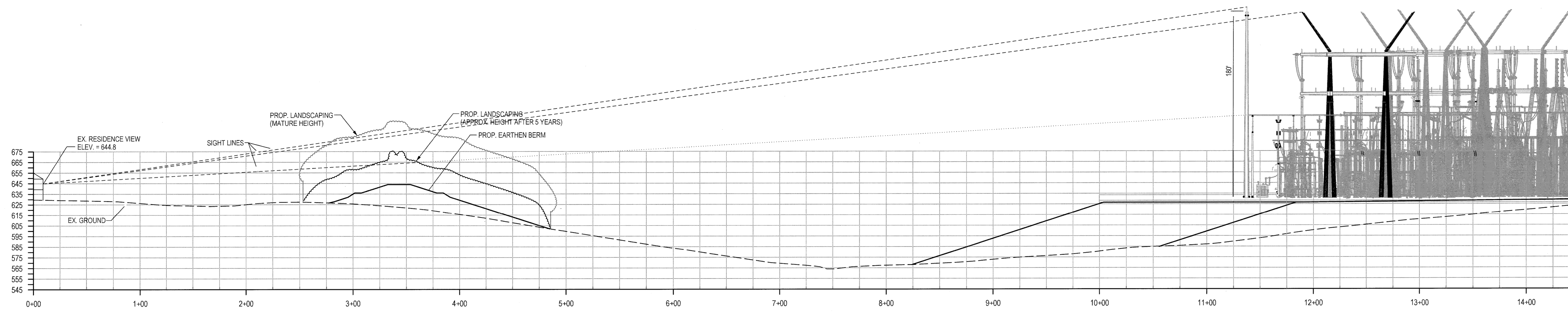


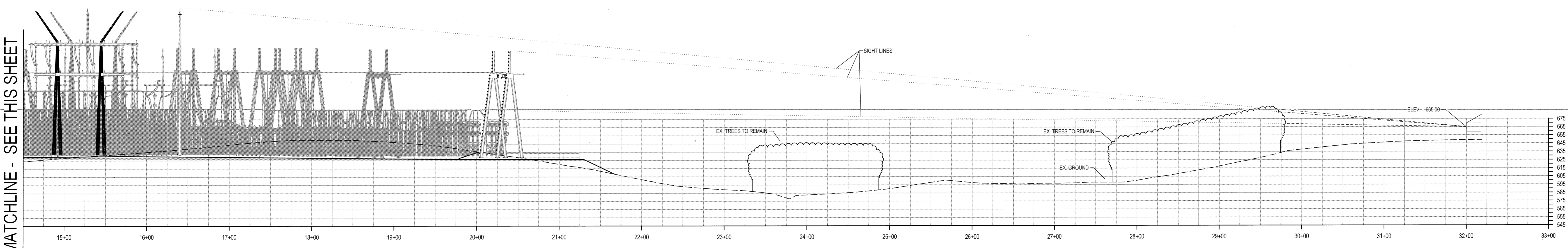
REFERENCE GRID A B C D E F G H I J K L M N O  
 The original of this drawing document was prepared by Laidman, Soltesz, Associates, Inc. (LSA). If this document was not obtained directly from LSA and/or it was transmitted electronically, LSA cannot guarantee that unauthorized changes and/or alterations were not made by others. It is the responsibility of the user to verify the accuracy of any information that has been transmitted by electronic means.



MATCHLINE - SEE THIS SHEET

**SCREENING CROSS SECTION 10**

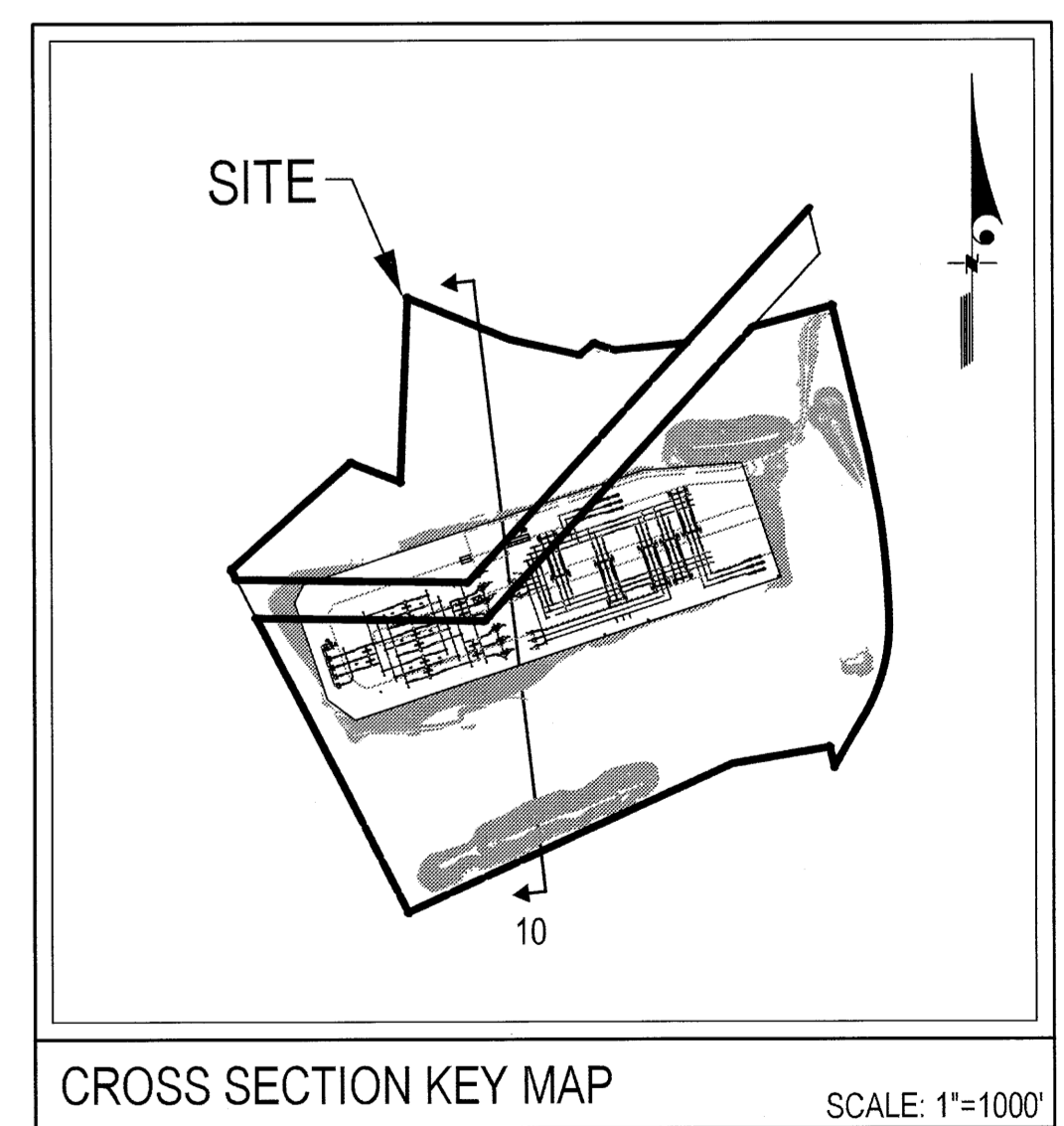
SCALE: H: 1"=50'  
V: 1"=50'



**SCREENING CROSS SECTION 10 (CONT.)**

SCALE: H: 1"=50'  
V: 1"=50'

MATCHLINE - SEE THIS SHEET




**Laidman Soltesz Associates, Inc.**  
 Rockville Office  
 2 Research Place, Suite 100  
 Rockville, MD 20850  
 t. 301.948.2750 f. 301.948.9067  
 www.LSAssociates.net

NO.	REVISIONS	BY	DATE
1	DATE: AUGUST 2010		
2	DESIGNED: G.P.	TECHNICIAN: G.M.M.	CHECKED: K.C.R.

**MISS UTILITY NOTE**

INFORMATION CONCERNING EXISTING UNDERGROUND UTILITIES WAS OBTAINED FROM AVAILABLE RECORDS. THE CONTRACTOR MUST DETERMINE THE EXACT LOCATION AND ELEVATION OF ALL EXISTING UTILITIES AND UTILITY CROSSINGS BY DIGGING TEST PITS BY HAND, WELL IN ADVANCE OF THE START OF EXCAVATION. CONTACT "MISS UTILITY" AT 1-800-251-7777, 48 HOURS PRIOR TO THE START OF EXCAVATION. IF CLEARANCES ARE LESS THAN SHOWN ON THIS PLAN OR TWELVE (12) INCHES, WHICHEVER IS LESS, CONTACT THE ENGINEER AND THE UTILITY COMPANY BEFORE PROCEEDING WITH CONSTRUCTION. CLEARANCES LESS THAN NOTED MAY REQUIRE REVISIONS TO THIS PLAN.

**PREPARED FOR:**


KENNY CONSTRUCTION COMPANY  
 12916 CONAMAR DRIVE  
 SUITE 1001 / SUITE # 205  
 HAGERSTOWN, MARYLAND 21742  
 PHONE: 301-745-9985  
 FAX: 301-745-3636  
 ATTN: MR. ROBERT DAHLIN

COPYRIGHT ADCN THE MAP PEOPLE PERMITTED USE NUMBER 20111199	
MAP: 4889	GRID: C3, C4, D3, D4
TAX MAP: 89	ZONING CATEGORY: 'A'
WSSD 200 SHEET:	
SITE DATUM:	
HORIZONTAL: NAD 83	
VERTICAL: NAD 83	

**LANDSCAPE SCREENING CROSS SECTIONS - 4**

**KEMPTOWN SUBSTATION**

SITUATED AT THE INTERSECTION OF BARTHOLOWS ROAD  
AND WEST OAK DRIVE  
NEW MARKET ELECTION DISTRICT No. 9  
FREDERICK COUNTY, MARYLAND

  
 SHEET **23**  
 OF **23**  
 PROJECT NO.  
 1814-00-00  
LSA PLOT COMMENTS